

# Haus Zwingli

## Flooded with light

.. the hall is bathed in warm light emanating from huge windows with historic leadlight glass work

## Accommodating

.. for different events such as small conventions, press conferences, readings, concerts and dinners

## Where it's all happening

.. located near Mediaspree in Berlin's hub of cultural enterprise, just 5 minutes from Warschauer Straße station (U and S-Bahn)

## Full service

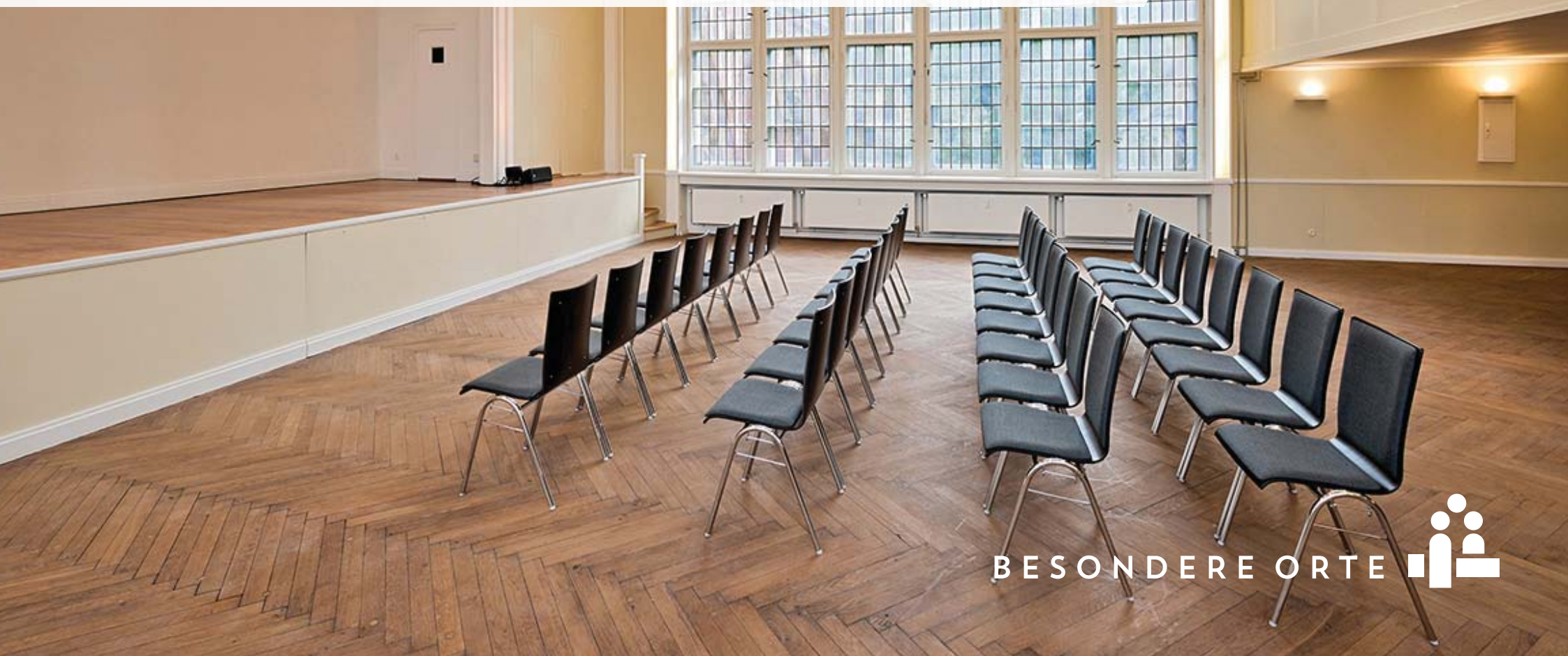
.. catering, audiovisual equipment, furnishings, staff, branding

## Outdoors

.. rooftop terrace

## Green

.. green electricity supply, event tickets from German Rail (DB), EMAS certified



# Haus Zwingli

exclusive and flooded with light



## At a glance

- ✓ 350m<sup>2</sup>
- ✓ 150 people
- ✓ hall, gallery
- ✓ courtyard and roof terrace
- ✓ up to 6m-high ceilings
- ✓ daylight
- ✓ 300 m to Warschauer Straße station

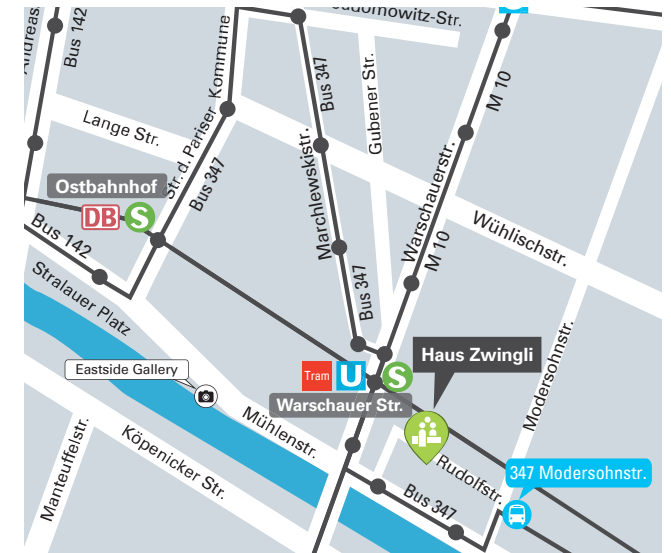
Haus Zwingli is centrally located and adjacent to Zwinglikirche.

The main event hall is flooded with natural daylight through vast stained glass windows on both sides.

These, in addition to the 6m-high ceilings and parquet floors, create a uniquely elegant atmosphere.

This venue is completed with a generous inner courtyard and a rooftop terrace for intimate, outdoor get-togethers.

Event Space	M <sup>2</sup>	Height	Banq.	Row	Recpt.	Dayl.
Huldrych-Saal	128	6	80	120	150	●
Galery Huldrych-Saal	66	3			50	●
Foyer Huldrych-Saal	33	3			50	●
Reception room	45	3		30	20	●
Rooftop terrace	60				60	●



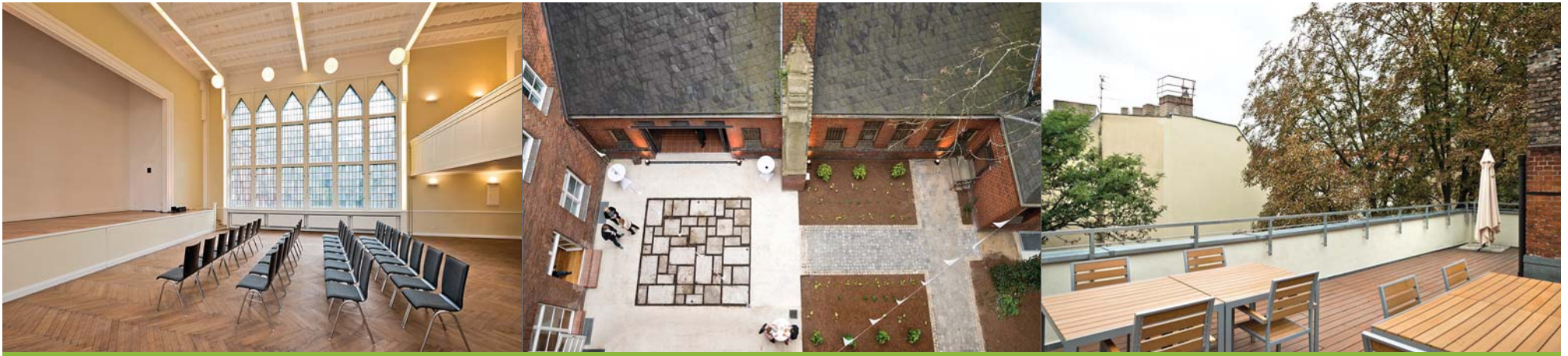
## Arrival

- Underground: U1 to Warschauer Str., 3 min. walk
- Train: S5, S7, S75 to Warschauer Str., 3 min. walk
- Tram: M10 to Warschauer Str., 5 min. walk
- Bus: 347 to Modersohnstraße, 2 min. walk

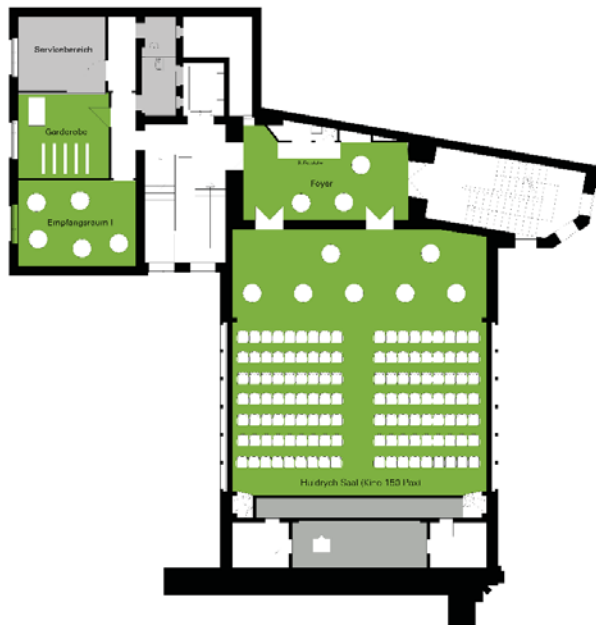


# Haus Zwingli

350m<sup>2</sup> event space for up to 150 people



3<sup>rd</sup> Floor Huldrych Hall



4<sup>th</sup> Floor gallery to hall and rooftop terrace

