

Neue Mälzerei

Historic charm

.. original brick walls, domed rooms steeped in history

A wonder with space

.. 1 hall and 5 seminar rooms all on one floor, walls can be opened or closed for effective and flexible use of space

Multifaceted

.. for conferences, workshops, product presentations and events

Full service

.. audiovisual equipment, furnishings, catering, staff, branding

Easy to get to

.. 2 km from Alexanderplatz

Green

.. green energy supply, German Rail (DB) event ticket, certified by EMAS



Neue Mälzerei

compact and versatile



At a glance

- ✓ 800m²
- ✓ 150 people
- ✓ 1 hall und 5 seminar rooms

- ✓ Elysium, terrace
- ✓ ceiling height of up to 5m
- ✓ daylight

Räume	M ²	L x W	Height	Row	Parl.	Banq.	U	Circle	Recpt.	Dayl.
Plenary hall	130	20,2 x 6,4	2,8	140	74	80	46	60	140	●
Domed hall n/s	95	10 x 9,5	5,0	79	44	50	26	40	75	●
Lobby	110	17 x 6,4	2,8						75	●
Lounge	60	10 x 6,4	2,8			32			50	●
Seminar I	47	7,4 x 6,4	2,8	45	24	30	18	26	45	●
Seminar II	51	8 x 6,4	2,8	54	24	30	20	26	25	●
Seminar III	30	4,6 x 6,4	2,8	23	15	20	16	22		●
Seminar I+II	98	15,4 x 6,4	2,8	107	57	70	38	45	60	●
Elysium	170	18 x 11,5	3,4	102	51	50	32	50	100	●
Terraca	72	6 x 12				48			60	●



Arrival

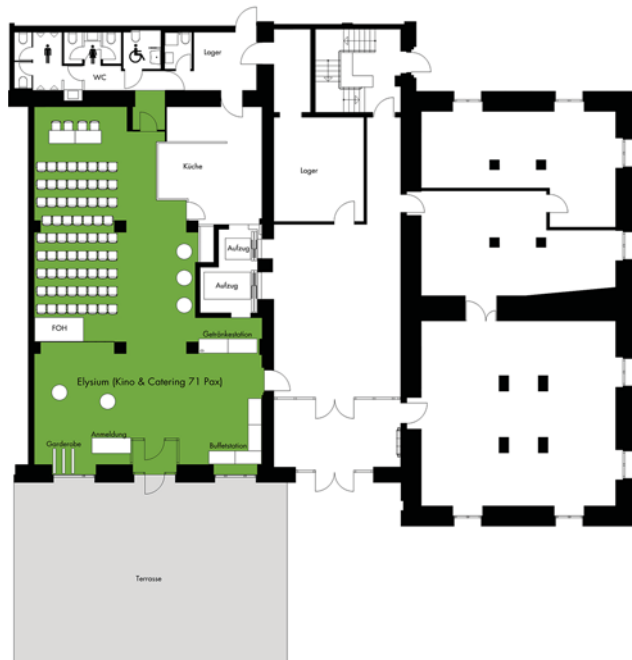
- Underground: U5 bis Strausberger Platz, exit Lebuser Str., 3 min. walk
- Tram: M5, M6 and M8 to Platz der Vereinten Nationen, 3 min. walk
- Bus: 142 from Hauptbahnhof or Ostbahnhof to Friedrichsberger Straße, 2 min. walk

Neue Mälzerei

800m² event space for up to 150 people



5th Floor



Ground floor

