

Zwinglikirche

Magnificent

.. 180 vintage lightbulbs illuminate the church hall

Jack of all trades

.. for events such as fashion shows, award ceremonies, dinners, concerts...

Hotspot

.. in Berlin's hottest district for sub-cultures and media enterprise, just 5 minutes from Warschauer Straße station

Full service

.. catering, audiovisual equipment, furnishings, staff, branding

Outdoors

.. generous courtyard

Green

.. green electricity supply, German Rail (DB) event ticket



Zwinglikirche

inspiring and noble



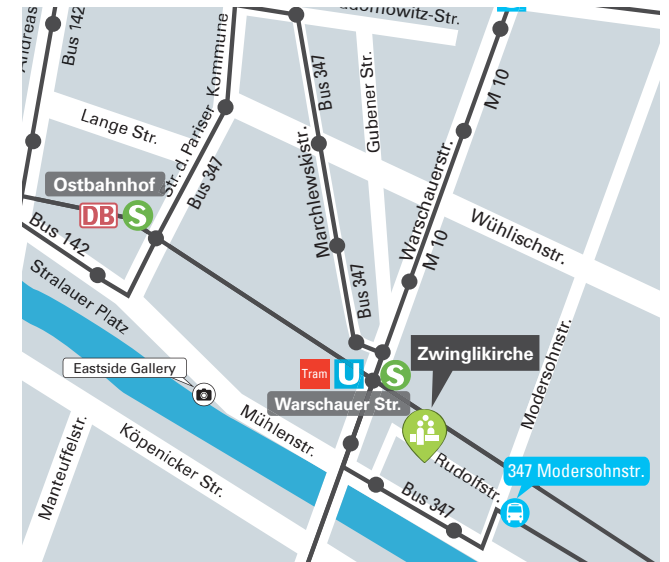
At a glance

- ✓ 800m²
- ✓ 400 people
- ✓ 1 hall, 2 additional rooms
- ✓ courtyard
- ✓ ceiling height of up to 20m
- ✓ daylight
- ✓ 300 m to Warschauer Straße station

The Zwinglikirche boasts lovingly restored historical details and is located in the immediate surrounding of Warschauer Straße (also adjacent to the underground / rail station of the same name).

With its exceptional ambience, this venue is suitable for weddings, fashion shows, receptions, balls, gala dinners and other events.

Event Space	M ²	Height	Banq.	Row	Recpt.	Dayl.
Hall - total space	520	20	160	345	400	●
Hall - adjacent bay	105	5	45	87	100	●
Winter church	45	5	24	45	50	●
Backstage	45	4				●
Courtyard	340				250	●
Foyer Danneckerstr.	20	4				●
Foyer Rudolfstr.	25	4				●

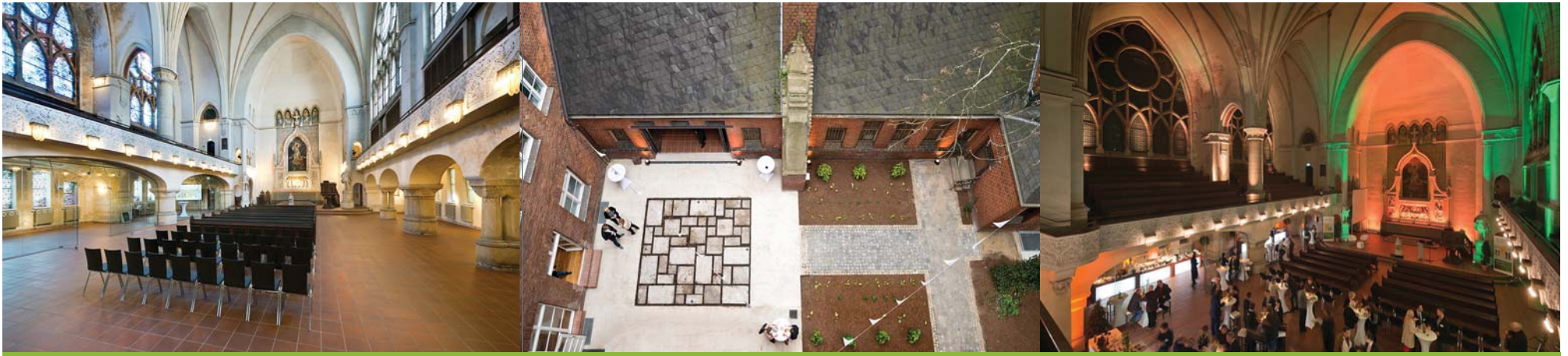


Arrival

- Underground: U1 to Warschauer Str., 3 min. walk
- Train: S5, S7, S75 to Warschauer Str., 3 min. walk
- Tram: M10 to Warschauer Str., 5 min. walk
- Bus: 347 to Modersohnstraße, 2 min. walk

Zwinglikirche

800m² event space for up to 400 people



Hall with adjacent courtyard

